

Getting Started with Adobe Lightroom

Library Module

Part 1

Two kinds of Lightroom



- Lightroom
 - A light version of Lightroom Classic
 - Images in the cloud and edit them across devices
- Lightroom Classic
 - What most photographers use
 - Images stored on local computer or network attached storage mapped to your local computer

A Little History

- LR was originally set up as a way to **organize** image files so that you can find them easily;
 - Keywords
 - Descriptive information about each image (meta data)
 - Moving image files around the hard drive
 - Collections
 - Flags
 - Ratings
- Image **Editing** capabilities have been significantly upgraded with each new release

Important Note

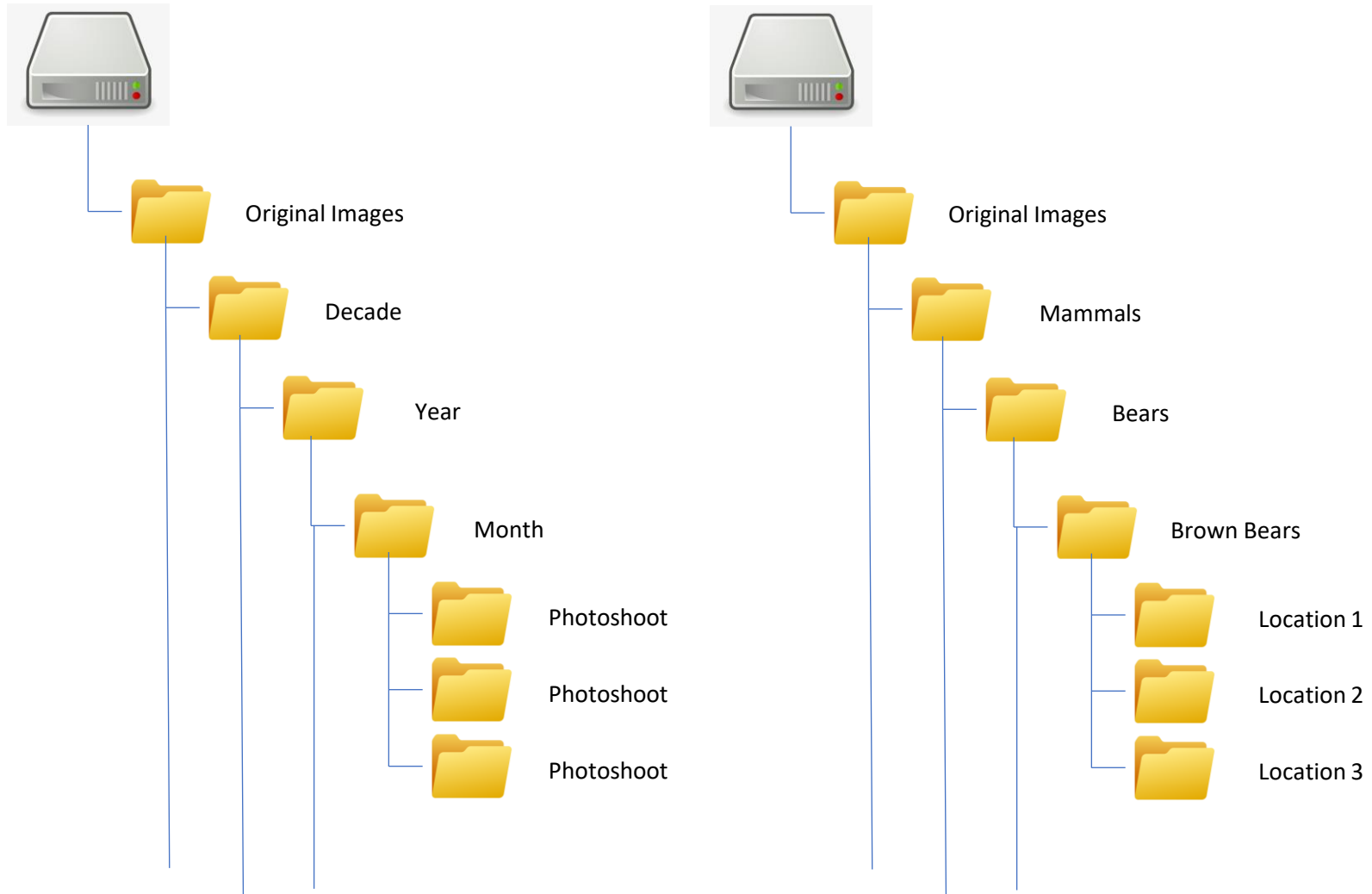
- LR is a “non-destructive” editor
 - LR NEVER alters the original image
 - Consider the original image files to be like old fashioned Negatives from which images are printed. The Negative never changes, but the way you process the image may change every time you print from the negative.



Preparation

- Develop a system for storing your files on disk
 - By Date
 - By Subject
 - By some other criteria
- It is best to put all original images under one inclusive folder
- It is best to have a separate file structure for the exported final processed images

Sample File Structures



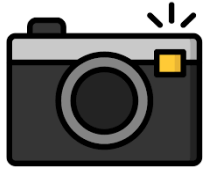
More File Structure

- It will be tedious to change file structure in the future, so it is good to settle on an approach now!
- Lightroom does not “include” the actual image in its catalog, it just has pointers to where the files are on your hard drive.
 - If you move image files on your hard drive AFTER importing them into LR, then LR won't know where to look for them.
 - Once imported into LR, use LR to move files around so that LR knows where to find them.

There are multiple ways to do things in LR

- For now, I will show you according to my workflow but be aware that this is not the only way to accomplish the same things.
- Watch a few YouTube videos and/or talk with other users.

My Work Flow



Take the
picture



Copy files to
computer

Put the images in
my file structure



Import
into LR
Catalog

Lightroom Catalog

- The catalog is a BIG database that holds all information related to each image
 - Location in the computer
 - Keywords
 - Metadata
 - Edits
 - Image Previews
 - What collections the image is in
- Store the Catalog outside the image file structure

Separate the File Structures



Original Images
(Negatives)



Catalogs
Index of Original Images +
additional information
about each image



Exported "Printed" Images



More LR Catalogs

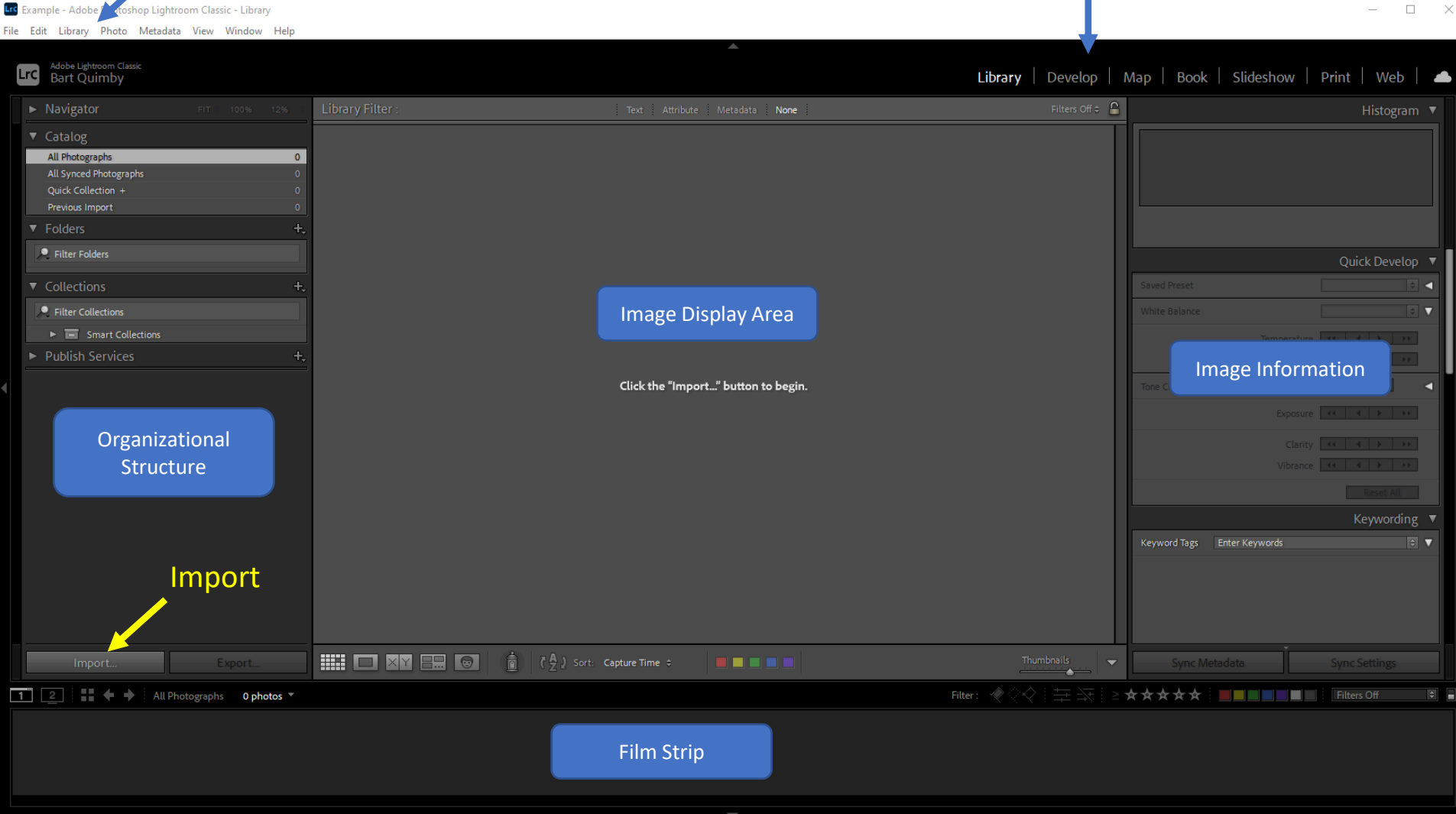
- You can have multiple catalogs
- Images can be referenced by multiple catalogs
- You can only search within one catalog at a time
- LR reboots when you change catalogs

Create a Catalog

- From the top menu, select **File -> New Catalog**
- The Catalog **MUST** be on your physical computer. It cannot be on an external or networked drive
- Find a place on your computer to put the catalog
 - On my computer, I put them in **C:\Users\bartq\Pictures\LRCatalogs**

Menu Bar

Modules



The Import Dialog Window

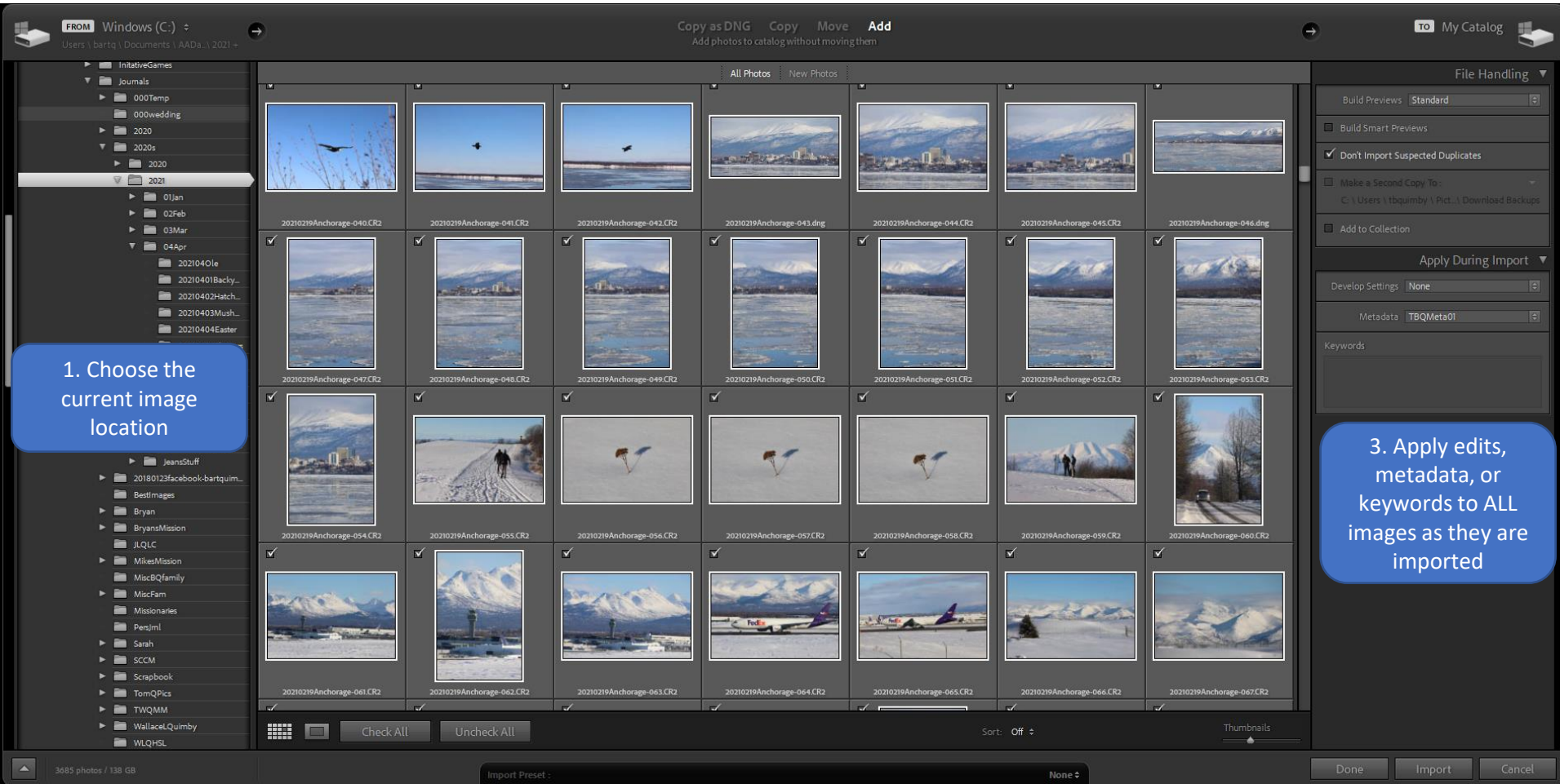
2. Decide how you want to import

1. Choose the current image location

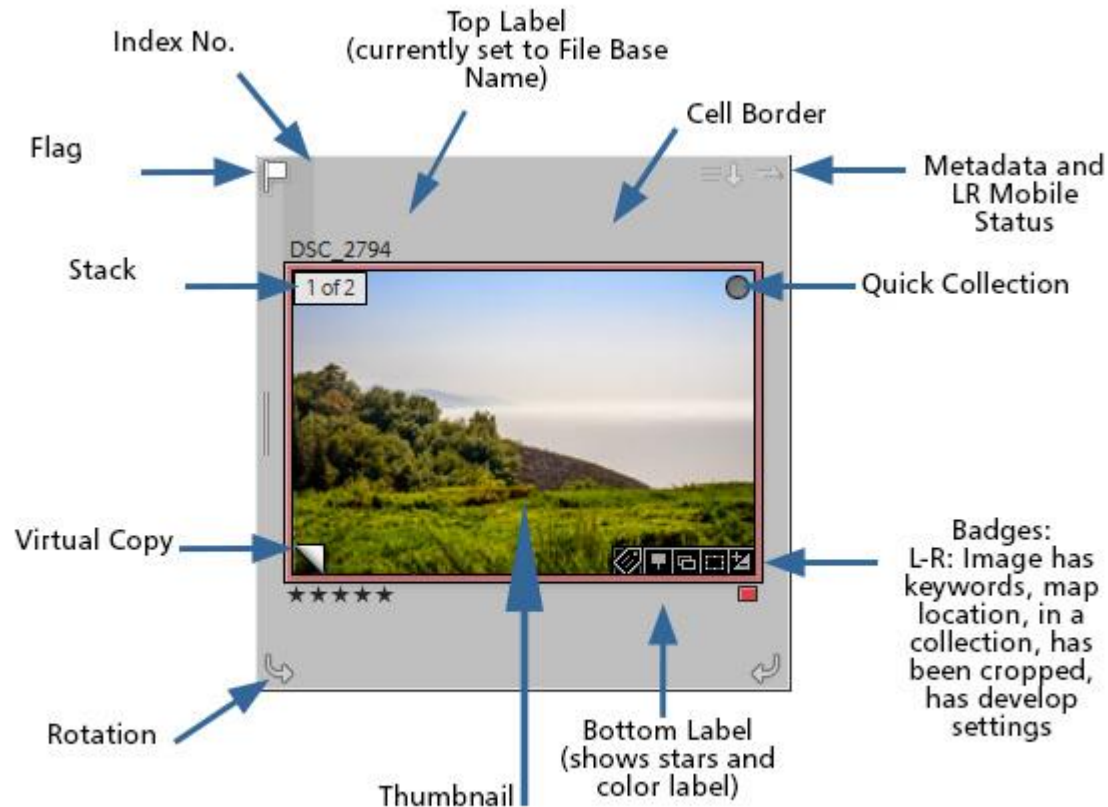
3. Apply edits, metadata, or keywords to ALL images as they are imported

4. Decide which images to import

5. Start the Import



The Thumbnail



Change your view options

- **<ctrl> J** or,
- Through the menu system:
View -> View Options

