



STRETCH YOUR SKILLS WITH PHOTO ASSIGNMENTS

Ole'!

Winter 2025 – Tuesday Section

Week 4: Dramatic Lighting

ASSIGNMENT #4: DRAMATIC LIGHTING

Submit two captivating images that make use of DRAMATIC LIGHTING. The light should be a major contributing element to each image. Any subject will do as long as the lighting is dramatic.

The pictures must be taken between now and Sunday (3/2)

Visit <https://qfam.org/PhotoAssign/> for how to upload the image

Images due Sunday 2 March (or earlier!)



401 a-Meg Parsons



401b-Meg Parsons



402a-Shirley - Reflections



402b-Shirley



403a-Janine Forrest – Crystal Light



403b-Janine Forrest – It's Five O'Clock



404a-Jim Cantor – Night ice



404b-Jim Cantor – Night ice



405a-Sandy



505b-Sandy



406-Jan Wachsmuth



407a-Charles Iliff – Light



407a-Charles Iliff – Light



408a-Bob Estey – fire



408b-Bob Estey – Frozen moon Enceladus



409b-Patrick Corbett



409b-Patrick Corbett



410-Bart Quimby

EXTRA IMAGES

Only the Photographer and Moderator gets to talk about these images



451 - Shirley



452-Bob Estey – Sunlight

Ole Photo Show

December 2025

Jitter's Coffee House, Eagle River, AK

Learn all about it at: <https://qfam.org/OlePhotoSIG/PhotoContest/>

Categories:

- Celebrating Motion
- Leading Lines
- Light Play
- Nature

Open to ALL Ole' members & participants in the Alaska Photo Chat

2025 OLE PHOTO SIG SHOW

Images due mid October

TWO OPPORTUNITIES...

Ole' Photography Shared Interest Group (<https://qfam.org/OlePhotoSIG/index.htm>)

Meets 2nd Monday of each month on Zoom to listen to speakers and share ideas.

Has a closed Facebook group used to share and discuss images.

Has an inhouse annual photography competition with selected images being shown at Jitter's coffee house in Eagle River during the month of December.
(<https://qfam.org/OlePhotoSIG/PhotoContest/index.htm>)

Alaska Photo Chat (<https://qfam.org/PhotoChat/>)

An informal photography discussion group that meets three times a week (most of the time).

The group grew out of the Ole Photo SIG, but is not limited to Photo SIG members.

A great place to raise your photography questions and get some answers.

The website has records of a few tutorial sessions that the group has done.

ASSIGNMENT #5: LEADING LINES

Submit two images that have strong LEADING LINES.

You should consider positioning your lines to direct attention to a focal point, like a building, person or natural feature.

The pictures must be taken between now and Sunday (3/16)

Visit <https://qfam.org/PhotoAssign/> for how to upload the image

Images due Sunday 16 March (or earlier!)

LEADING LINES

Leading lines are lines that draw the viewer's eye through the image and towards the subject. They can be straight or curved, horizontal, vertical or diagonal, and everything in between.

Leading lines can be created by any element within the scene, such as roads, rivers, bridges, buildings, or even people. The important thing is that they create a visual path for the viewer to follow, leading them towards the subject and creating a sense of depth and movement within the image.

From Visual Education: <https://visualeducation.com/leading-lines/>

SOME GOOD REFERENCES

- A Guide to leading lines in photography ([By Adobe](#))
- Leading Lines in Photography: The Essential Guide ([Digital Photography School](#))
- Leading Lines – Everything You Need To Know ([Nashville Film Institute](#))

TECHNIQUES

- Look for: Horizontal, Vertical, Diagonal, and Converging Lines
- Determine what your focal point is
- Choose your position to best use the leading lines to create depth
- Consider the rule of thirds
- Consider location and time of day



Lines leading to People



T. BART QUIMBY
Photography



Lines that take
you somewhere

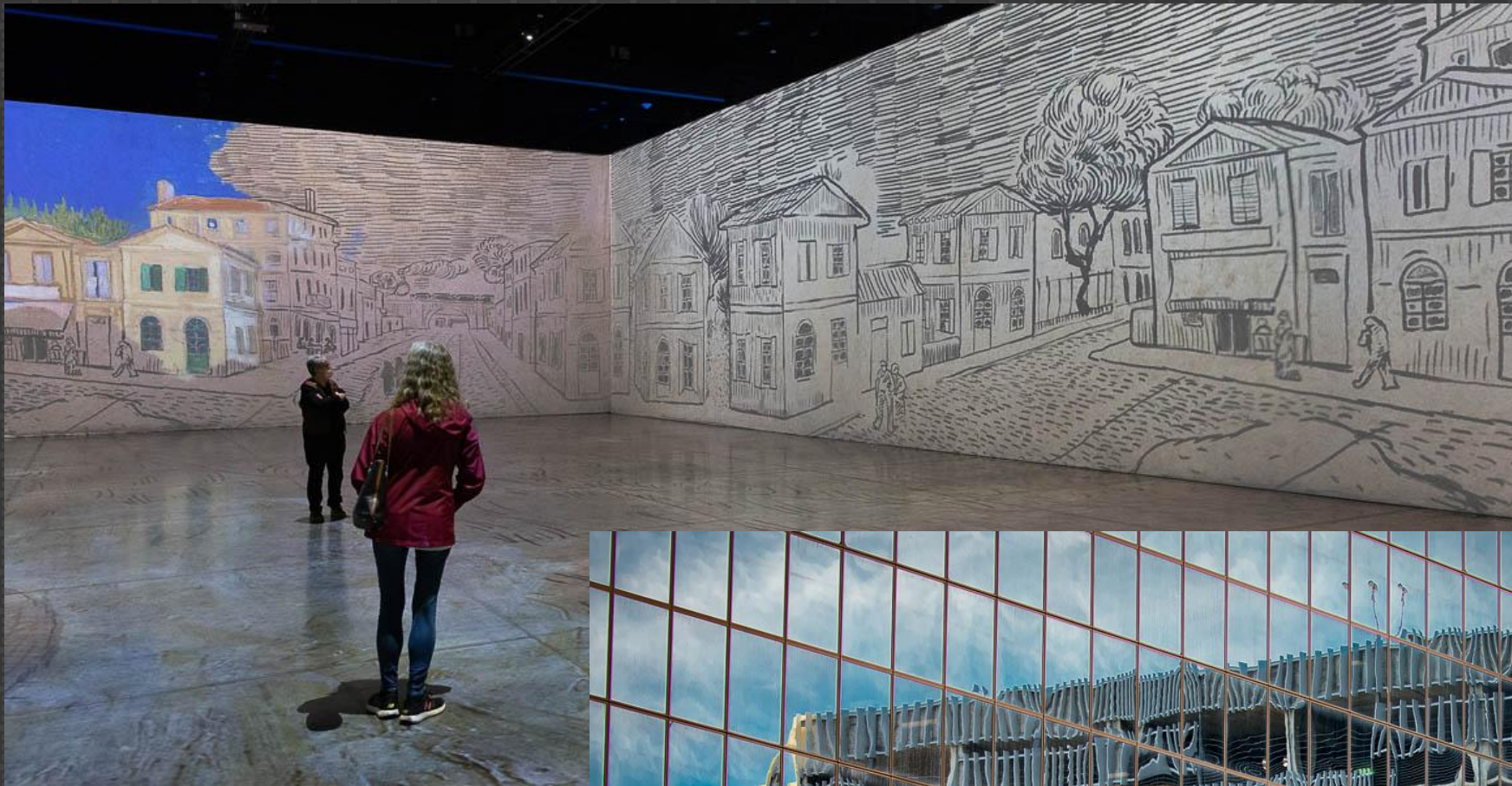
T. BART QUIMBY
Photography



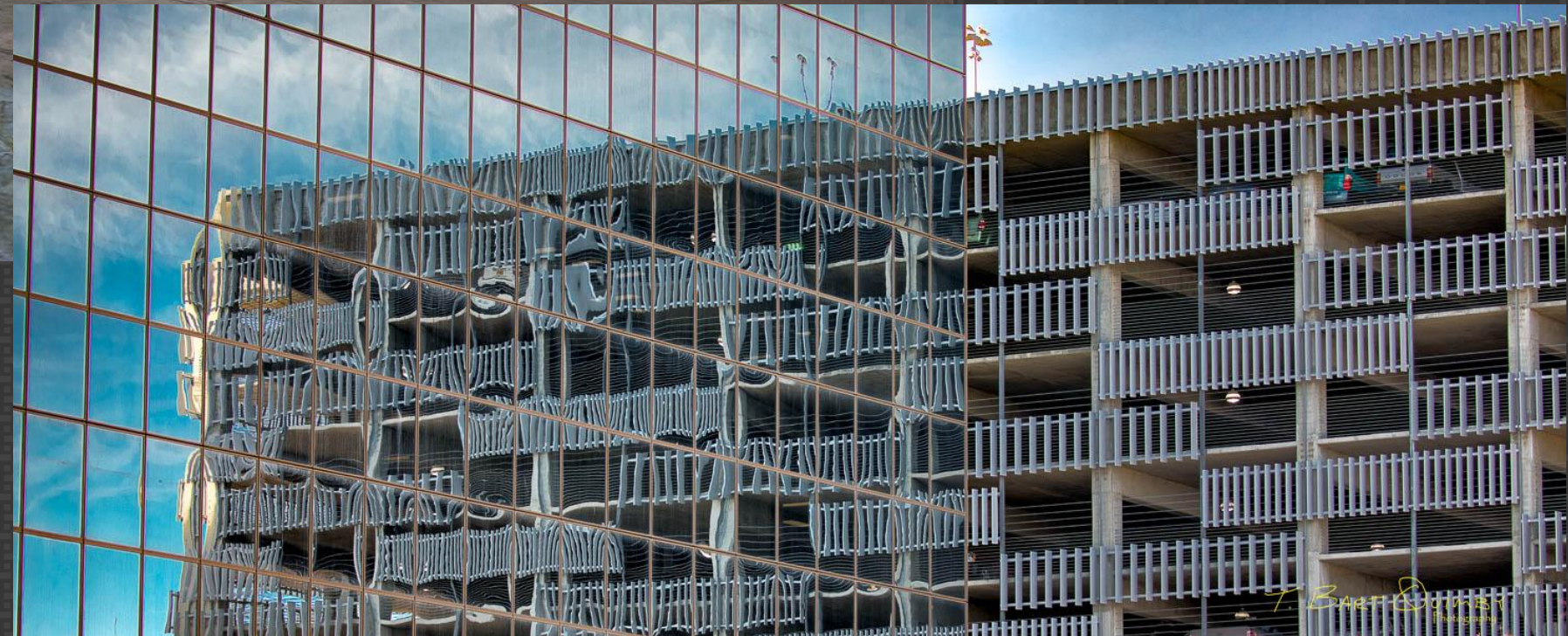
T. BART QUIMBY
Photography



Think about your angle



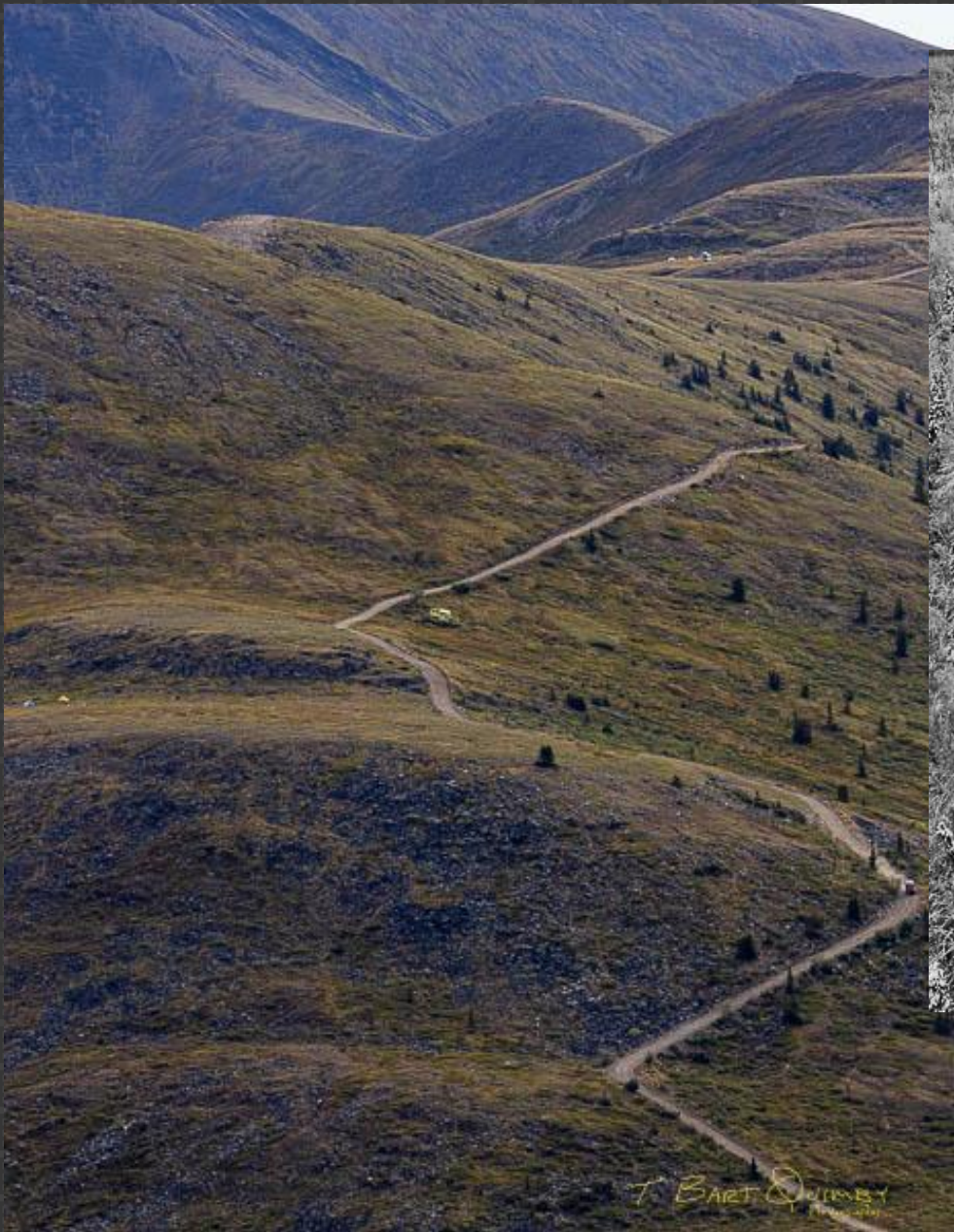
Converging Lines



T. BARTON JONES
Architect



Urban Lines



Lines that lead you
through the image

Until Week After Next....
(Next week is Spring Break)

Happy Shooting!