

ASSIGNMENT #5: LEADING LINES

Submit two images that have strong LEADING LINES.

You should consider positioning your lines to direct attention to a focal point, like a building, person or natural feature.

The pictures must be taken between now and Sunday (3/16)

Visit <https://qfam.org/PhotoAssign/> for how to upload the image

Images due Sunday 16 March (or earlier!)

LEADING LINES

Leading lines are lines that draw the viewer's eye through the image and towards the subject. They can be straight or curved, horizontal, vertical or diagonal, and everything in between.

Leading lines can be created by any element within the scene, such as roads, rivers, bridges, buildings, or even people. The important thing is that they create a visual path for the viewer to follow, leading them towards the subject and creating a sense of depth and movement within the image.

From Visual Education: <https://visualeducation.com/leading-lines/>

SOME GOOD REFERENCES

- A Guide to leading lines in photography ([By Adobe](#))
- Leading Lines in Photography: The Essential Guide ([Digital Photography School](#))
- Leading Lines – Everything You Need To Know ([Nashville Film Institute](#))

TECHNIQUES

- Look for: Horizontal, Vertical, Diagonal, and Converging Lines
- Determine what your focal point is
- Choose your position to best use the leading lines to create depth
- Consider the rule of thirds
- Consider location and time of day



Lines leading to People



T. BART QUIMBY
Photography



Lines that take
you somewhere

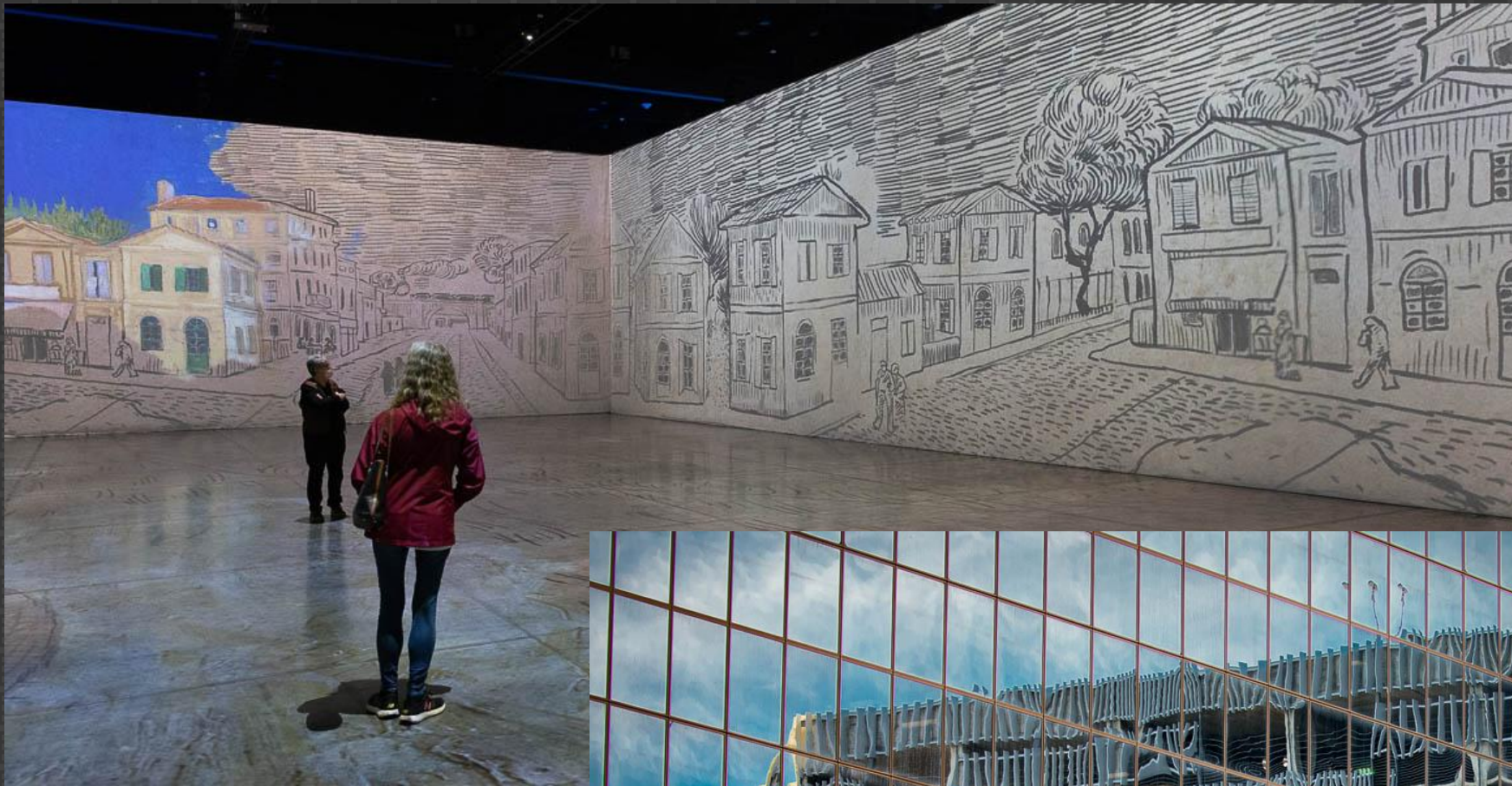
T. BART QUIMBY
Photography



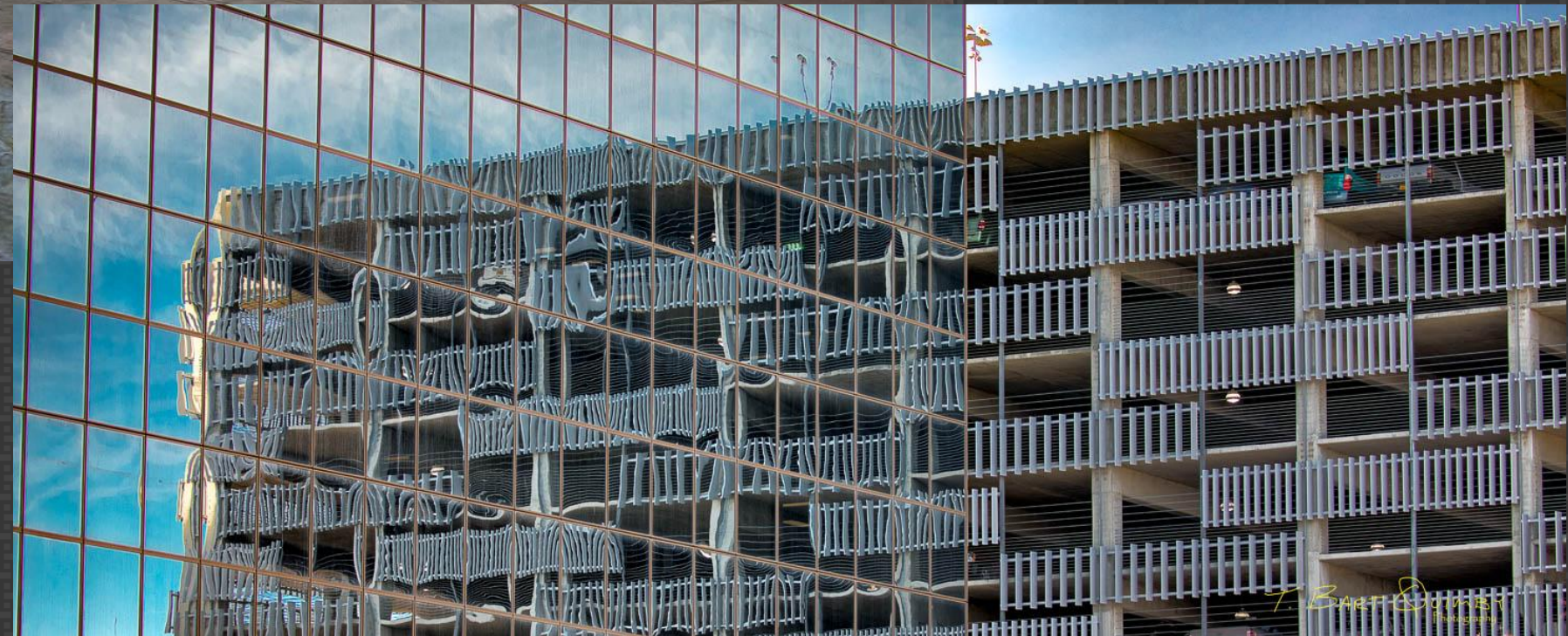
T. BART QUIMBY
Photography



Think about your angle



Converging Lines

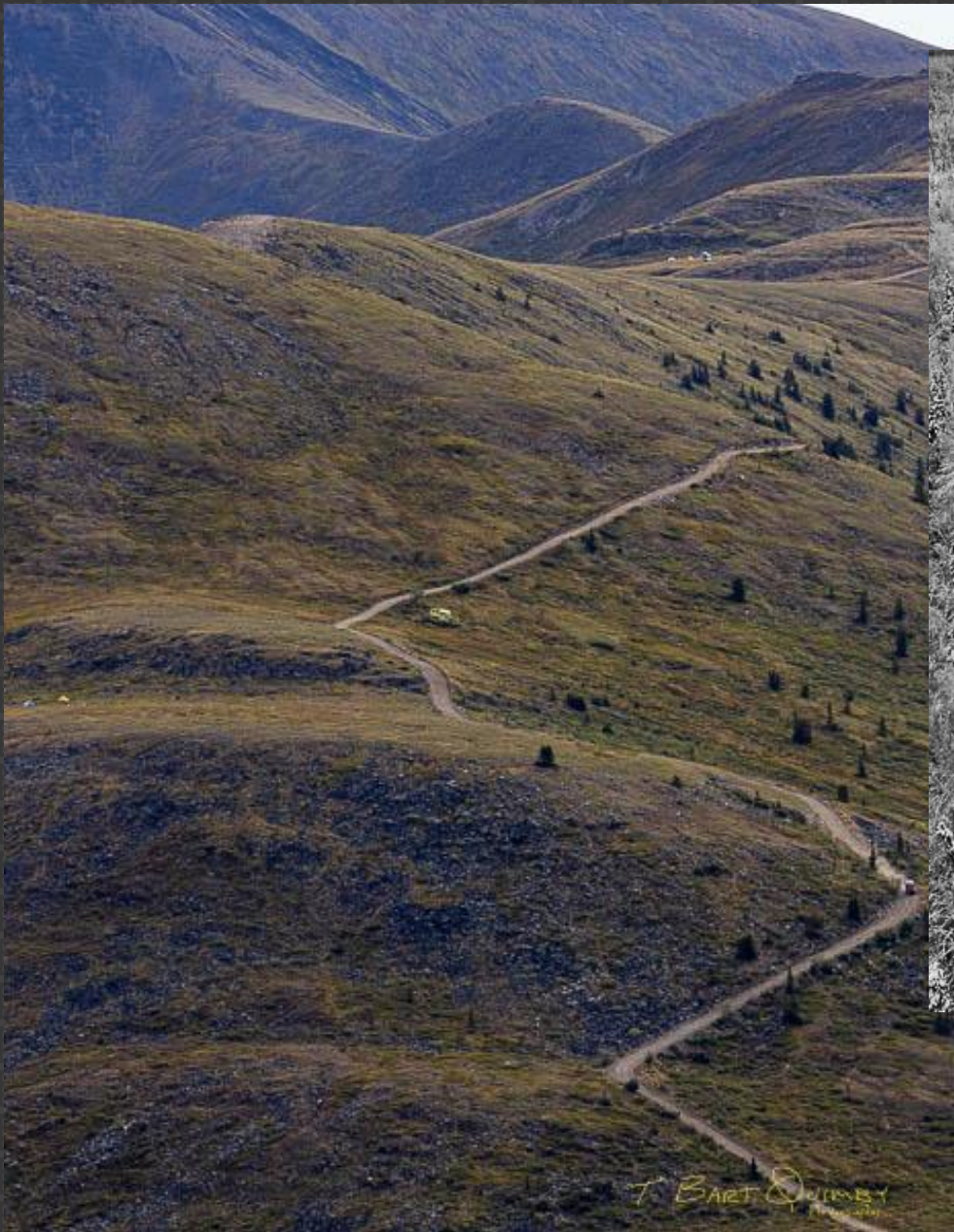


T. BARTON JONES
Architect



Urban Lines





Lines that lead you
through the image